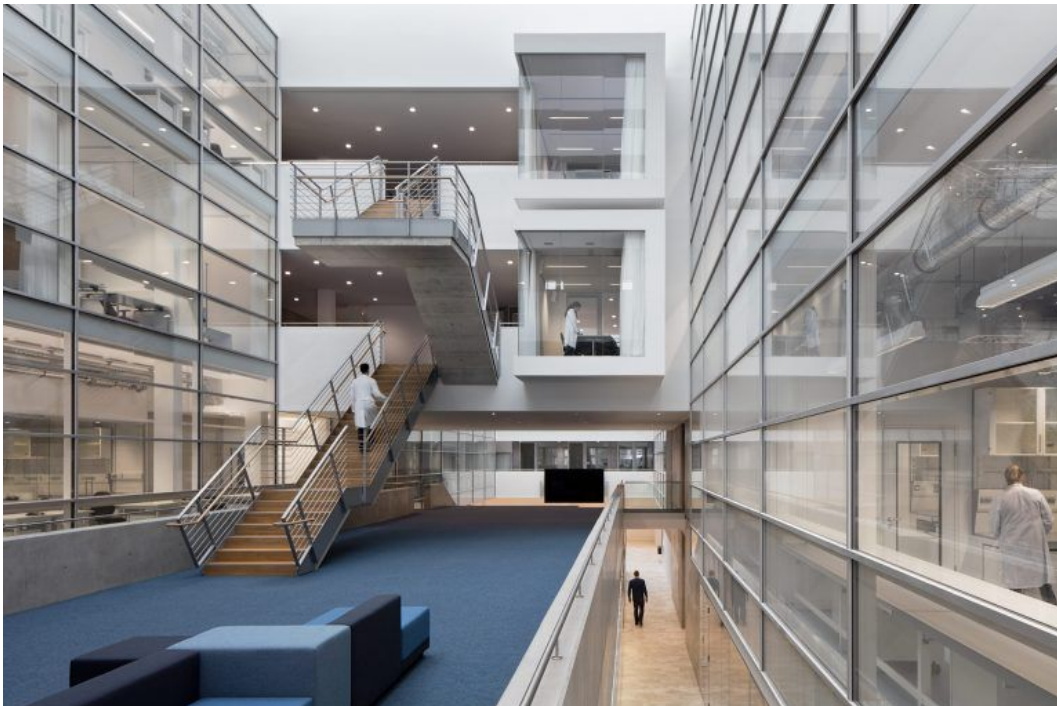


hammeskrause architekten

Project Sheet

# Interdisciplinary research Center of Brain, Behavior and Metabolism CBBM, Lübeck University

#Education #Science



## Project Panel

Clients	Gebäudemanagement Schleswig-Holstein AöR (GMSH) on behalf of the Federal State of Schleswig-Holstein
User	University of Lübeck
Effective Area	5435 qm
Floor Area	13180 qm
Floor Volume	55020 cbm
Completion	2016

# hammeskrause architekten

Awards

German Award for University Buildings 2018, Distinction

Photos

Werner Huthmacher

The research centre, CBBM, Center of Brain, Behavior and Metabolism at the University of Lübeck provides research spaces for 320 scientists, medical experts and students from the fields of brain, hormones and behaviour. Besides the high functional demands the concept of the building takes aspects of **interdisciplinary research** into special account. The CBBM is coordinator of joint research projects and engages in promoting young science professionals. Two bright, light-flooded atria form the **communicative centre**. They are connected to one another in the centre of the building by a large bridge and several flights of stairs. Here, small lounge areas and tea kitchens invite students as well as teachers to have **informal encounters**, fostering an **interdisciplinary exchange** among the various teams. Around the atria, laboratory clusters, sleep labs and glucose clamp units, all glazed from floor to ceiling, allow the observation of the scientists' work. Four seminar rooms on the ground floor, three of which can be divided into smaller units, are linked to the multifunctional lobby.

Space for communication is an essential part of a sustainable building concept.

Jürgen Naverschnigg, Project Manager

In the upper storeys, four glazed meeting rooms are “suspended” into the void of the atria. More lounge areas with bar stools, benches and tea kitchens are distributed across the gallery levels – from here, users have long views into both sides of the building.

The atria, designed as meeting spots, allow the researchers to interact spontaneously. **For innovation not only occurs through experimental work but much more so during informal exchanges with colleagues, e.g. on coffee breaks.**

## hammeskrause architekten



The rectangular volume of CBBM with its characteristic horizontal façade structure harmoniously fits into the university campus ...



... and provides an identity-forming centre for the three institutes.

# hammeskrause architekten



The transparent entrance area opens up towards Marie-Curie-Straße, allowing a glimpse into the lobby with its multifunctional seminar and events area.

# hammeskrause architekten



Lectures, colloquia, lab classes as well as symposia and scientific congresses are held in this lobby.



hammeskrause architekten

Location

Center of Brain, Behavior and Metabolism CBBM, Lübeck  
University

Ratzeburger Allee 160  
23562 Lübeck  
Deutschland