

hammeskrause architekten

Project Sheet

From shirt manufacturing to freezing technology

Fraunhofer Institute for Biomedical Engineering, Sulzbach

#Industrial #Science



Project Panel

Clients	Fraunhofer-Gesellschaft zur Förderung der angewandten Forschung e.V., München
User	Fraunhofer Institut für Biomedizinische Technik IBMT
Effective Area	3298 qm
Floor Area	6426 qm
Floor Volume	29973 cbm
Completion	2014

hammeskrause architekten

Awards

Industrial Construction Award 2018, nomination

Photos

Wolf-Dieter Gericke

The brief asked for the transformation of a disused industrial complex, built towards the end of the 1960's for a **shirt manufacturer**, into a modern, highly equipped research and laboratory building for industrial research commissions. The Fraunhofer Institute for Biomedical Engineering, IBMT, is a **developer of technologies and manufacturer of technological devices**. The R & D commissions, by private and public clients from the manufacturing industries alike, are mainly in the fields of lab technology, theranostics and medicinal technology. They range from developing prototypes and field testing to construction and manufacturing, all carried out by the IBMT.



The reorganized and enlarged building for the Fraunhofer Institute for Biomedical Engineering, IBMT, is designed to fulfil the technical and functional requirements but also to give a long-term perspective to the existing buildings, and become **the Institute's signature** for biotechnology, biobanks and cryogenics.

hammeskrause architekten



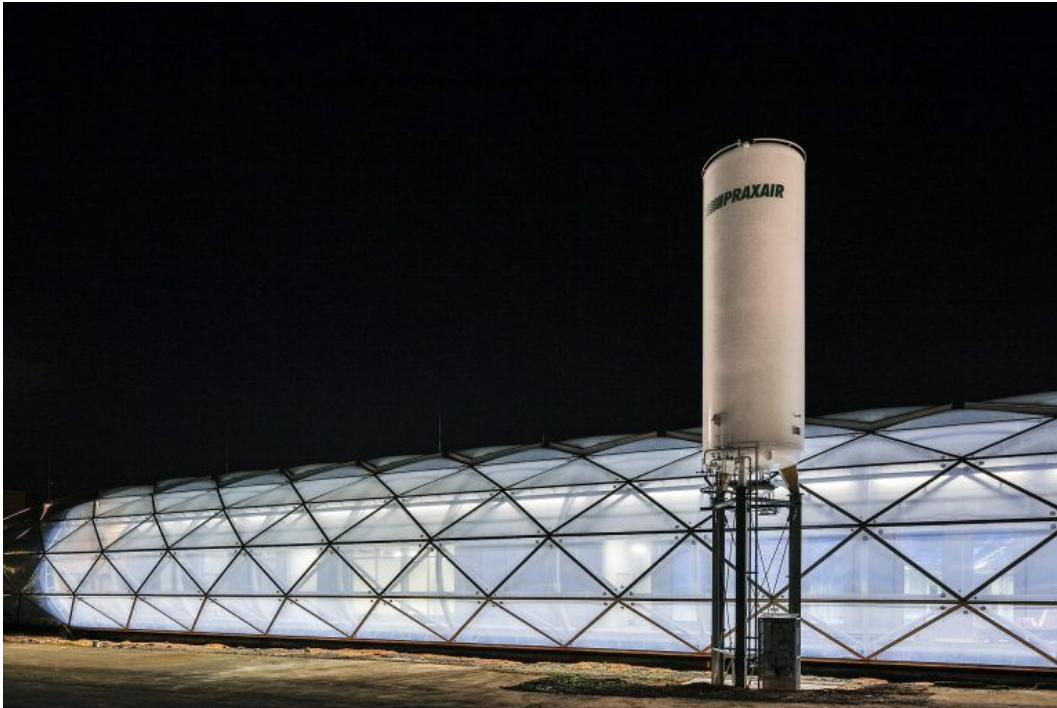
In formal terms the **membrane**, a three-layer screen of Ethylene tetrafluoroethylene foil, takes up the characteristics of the cryo vessels. It is meant to mediate between the rounded geometry of these and the clear-edged industry architecture.



The idea transcending the individual research projects is the cryobank, the collection of living genetic samples for the understanding of nature. The **cryo**

hammeskrause architekten

collection is about archiving single cells.



A place which creates **identity** and stays in mind.

For us, it is important that the building sparks mental connections, so the “cell membrane“ constitutes a building material symbolizing the Institute's work.

Markus Hammes

Façade generating identity in an industrial estate with a heterogeneous fabric:

- Design and material of the Ethylene tetrafluoroethylene foil (ETFE) screens are intended to make the façade *interact*
- the architectural form, the material chosen and the technology employed become the symbol of the innovative vigour of biomedical research and the singular collection of living cells in this location



hammeskrause architekten

Location

Fraunhofer Institute for Biomedical Engineering, Sulzbach

Joseph-von-Fraunhofer-Weg 1

66280 Sulzbach/Saar

Deutschland